

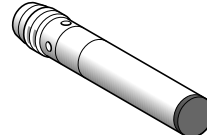
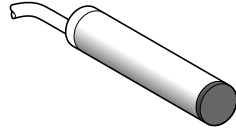
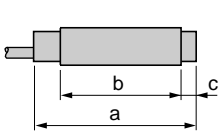
# Inductive proximity sensors

Cylindrical type, Ø 6.5 mm plain  
Metal case (brass or stainless steel), short  
d.c. supply

Accessories :  
page 3/0

References, characteristics, dimensions, schemes

## Flush mountable in metal



Lengths (mm) :  
a = Overall  
b = Plain section  
c = For non flush mounting sensors

a = 33 (XS1-L06●C410 : a = 50)  
b = 30 (XS1-L06●C410 : b = 47)

a = 42  
b = 34

	Stainless steel case	Brass case	Stainless steel case	Brass case
Nominal sensing distance (Sn)	1.5 mm	Increased range model 2.5 mm	1.5 mm	Increased range model 2.5 mm

## References

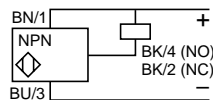
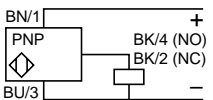
3-wire ---	PNP	NO	XS1-L06PA340	XS1-L06PA349	XS1-L06PA340S	XS1-L06PA349S
		NC	XS1-L06PB340	XS1-L06PB349	XS1-L06PB340S	—
	NPN	NO	XS1-L06NA340	XS1-L06NA349	XS1-L06NA340S	XS1-L06NA349S
		NC	XS1-L06NB340	XS1-L06NB349	XS1-L06NB340S	—
4-wire --- (complementary outputs)	PNP	NO + NC	XS1-L06PC410	—	—	—
	NPN	NO + NC	XS1-L06NC410	—	—	—
Weight (kg)			0.025	0.025	0.010	0.010

## Characteristics

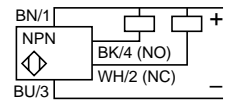
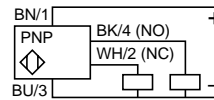
Connection	Pre-cabled, 3 x 0.11 mm <sup>2</sup> or 4 x 0.08 mm <sup>2</sup> , L = 2 m (1)		Connector (types 1 to 8) (2)	
Degree of protection	IP 67		Depending on connector (see pages 3/2 and 3/3)	
Operating zone	0...1.2 mm	0...2 mm	0...1.2 mm	0...2 mm
Repeat accuracy	3 % of Sr			
Differential travel	1...15 % of Sr			
Operating temperature	- 25...+ 70 °C	- 25...+ 50 °C	- 25...+ 70 °C	- 25...+ 50 °C
Output state indication	LED, annular		LED, 4 viewing ports at 90°	
Rated supply voltage	≡ 12...24 V			
Voltage limits (including ripple)	≡ 10...38 V (∼ 24 V rectified and filtered)			
Switching capacity	0...200 mA with overload and short-circuit protection			
Voltage drop, closed state	≤ 2 V	≤ 2.6 V	≤ 2 V	≤ 2.6 V
Current consumption, no-load	≤ 10 mA	≤ 10 mA	≤ 10 mA	≤ 10 mA
Maximum switching frequency	5000 Hz	350 Hz	5000 Hz	350 Hz
Delays	first-up	≤ 5 ms	≤ 5 ms	≤ 5 ms
	response	≤ 0.1 ms	≤ 0.1 ms	≤ 1 ms
	recovery	≤ 0.1 ms	≤ 4 ms	≤ 4 ms

## Wiring schemes

3-wire ---, NO or NC output  
XS1/XS2-L06●●340/340S/340D/349/349S/349D



4-wire ---, NO + NC output  
XS1-L06●●410/410D



**Note :** for XS●-L06●●34●S sensors, NO or NC output on terminal 4

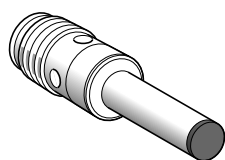
(1) Sensors pre-cabled with other cable lengths :

Length of cable	Suffix to be added to references stated above for 2 m pre-cabled sensors	Weight increase
5 m	L1	0.030 kg
10 m	L2	0.080 kg

Example : sensor XS1-L06PA340 with 5 m cable becomes XS1-L06PA340L1

(2) The type numbers refer to suitable female connectors and extension cables, see pages 3/2 to 3/5.

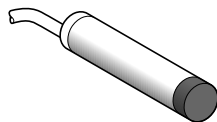
## Non flush mountable in metal



a = 45  
b = 24

Stainless steel case

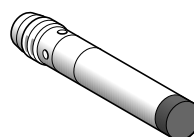
1.5 mm



a = 33  
b = 27  
c = 3

Stainless steel case

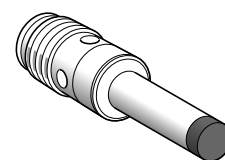
2.5 mm



a = 42  
b = 31  
c = 3

Stainless steel case

2.5 mm



a = 45  
b = 21  
c = 3

Stainless steel case

2.5 mm

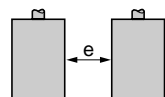
XS1-L06PA340D	XS1-L06PA349D	XS2-L06PA340	XS2-L06PA340S	XS2-L06PA340D
—	—	—	—	—
XS1-L06NA340D	XS1-L06NA349D	XS2-L06NA340	XS2-L06NA340S	XS2-L06NA340D
—	—	—	—	—
—	—	—	—	—
—	—	—	—	—
0.015	0.015	0.025	0.010	0.015

Connector (types 9, 10, 15, 16) (2)	Connector (types 9, 10, 11, 12, 15, 16) (2)	Pre-cabled, 3 x 0.11 or 4 x 0.08 mm <sup>2</sup> , L = 2 m (1)	Connector (types 1 to 8) (2)	Connector (types 9, 10, 15, 16) (2)
Depending on connector (see pages 3/4 and 3/5)		IP 67	Depending on connector (see pages 3/2 to 3/5)	
0...1.2 mm	0...2 mm	0...2 mm		
3 % of Sr				
1...15 % of Sr				
- 25...+ 70 °C		- 25...+ 70 °C		
LED, 4 viewing ports at 90°		LED, annular	LED, 4 viewing ports at 90°	
≡ 12...24 V				
≡ 10...38 V (≈ 24 V rectified and filtered)				
0...200 mA with overload and short-circuit protection				
≤ 2 V	≤ 2.6 V	≤ 2 V		
≤ 10 mA	≤ 10 mA	≤ 10 mA		
5000 Hz	350 Hz	5000 Hz		
≤ 5 ms	≤ 5 ms	≤ 5 ms		
≤ 0.1 ms	≤ 1 ms	≤ 0.1 ms		
≤ 0.1 ms	≤ 4 ms	≤ 0.1 ms		

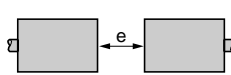
## Setting-up

Minimum mounting  
distances (mm)

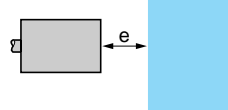
Side by side



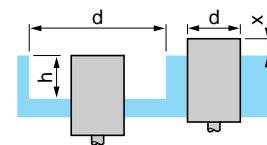
Face to face



Facing a metal object



Mounted in a metal support



XS1 flush mountable in metal	e ≥ 3	e ≥ 18	e ≥ 4.5	d ≥ 6.5, h ≥ 0	—
XS1 increased range models	e ≥ 5	e ≥ 30	e ≥ 7.5	d ≥ 10, h ≥ 1.6	d ≥ 6.5, x ≥ 1.3
XS2 non flush mountable in metal	e ≥ 10	e ≥ 30	e ≥ 7.5	d ≥ 19.5, h ≥ 5	—

## Other versions

Inductive proximity sensors specifically designed for other ambient operating temperatures.  
Please consult your local Customer support centre.