

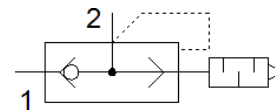
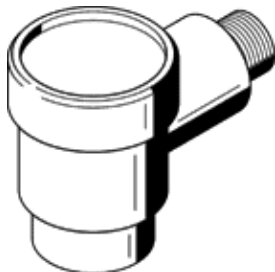
Rapid exhaust valve SEU-1/4

Part number: 6753

FESTO

The exhaust noise level is measured at 87 psi/6 bar to atmosphere at 3.28ft/1 m distance.

With built-in silencer.



Data sheet

Feature	values
Valve function	Quick exhaust
Pneumatic connection, port 1	G1/4
Pneumatic connection, port 2	G1/4
Mounting type	Threaded
Standard nominal flow rate, exhaust	1,100 l/min
Standard flow rate for exhaust 6→0 bar	2,300 l/min
Standard nominal flow rate for pressurization 6→5 bar	960 l/min
Working pressure	0.5 ... 10 bar
Ambient temperature	-20 ... 75 °C
Materials information, housing	Zinc die-casting
Operating medium	Compressed air in accordance with ISO8573-1:2010 [7:-:-]
Nominal size	7 mm
Assembly position	Any
Note on operating and pilot medium	Lubricated operation possible (subsequently required for further operation)
Medium temperature	-20 ... 75 °C
Sound pressure level	85 dB(A)
Product weight	120 g
Materials information for seals	NBR